



TOWN
SQUARE
DUBAI
by NSHAMA

HG HOLLAND
GARDENS



ULTIMATE LIFESTYLE AT YOUR DOOR STEP

CONTENTS

04

Community Facilities

05

About Town Square Dubai

08

About Holland Gardens

10

Interior & Exterior

13

Lifestyle & Facilities

16

Floor Plans



DISCOVER A NEW DIMENSION TO URBAN LIVING



10km
Green & Jogging Trail



13km
Cycling Trail



260,000sqm
of Green Area



50,000sqm
Town Square Park



8000sqm
Sports Area



Over 500
Retail Outlets

UNPARALLELED FACILITIES FOR A LIFE OF COMFORT & CONVENIENCE!

COMMUNITY FACILITIES

 Town Square Park	 Swimming Pool	 GYM	 Basket Ball Courts	 Football Pitch
 Cycling Track	 Jogging Track	 Retail Outlets	 Restaurants & Cafes	 Skate Park
 Barbeque Area	 Clinics	 Pharmacies	 Fitness Club	 Tailor Shop
 Squash & Tennis Court	 Kids Play Area	 Splash Pad	 Carousel	 Kids Train
 Padel Tennis Court	 Dog Park	 Veterinary Clinic	 Pet Shop	 Laundry Shop
 Grooming & Beauty Services	 Nurseries	 Mosque	 Supermarkets	 Outdoor Cinema





A vibrant community offering elegantly designed homes and amenities for Urban living.

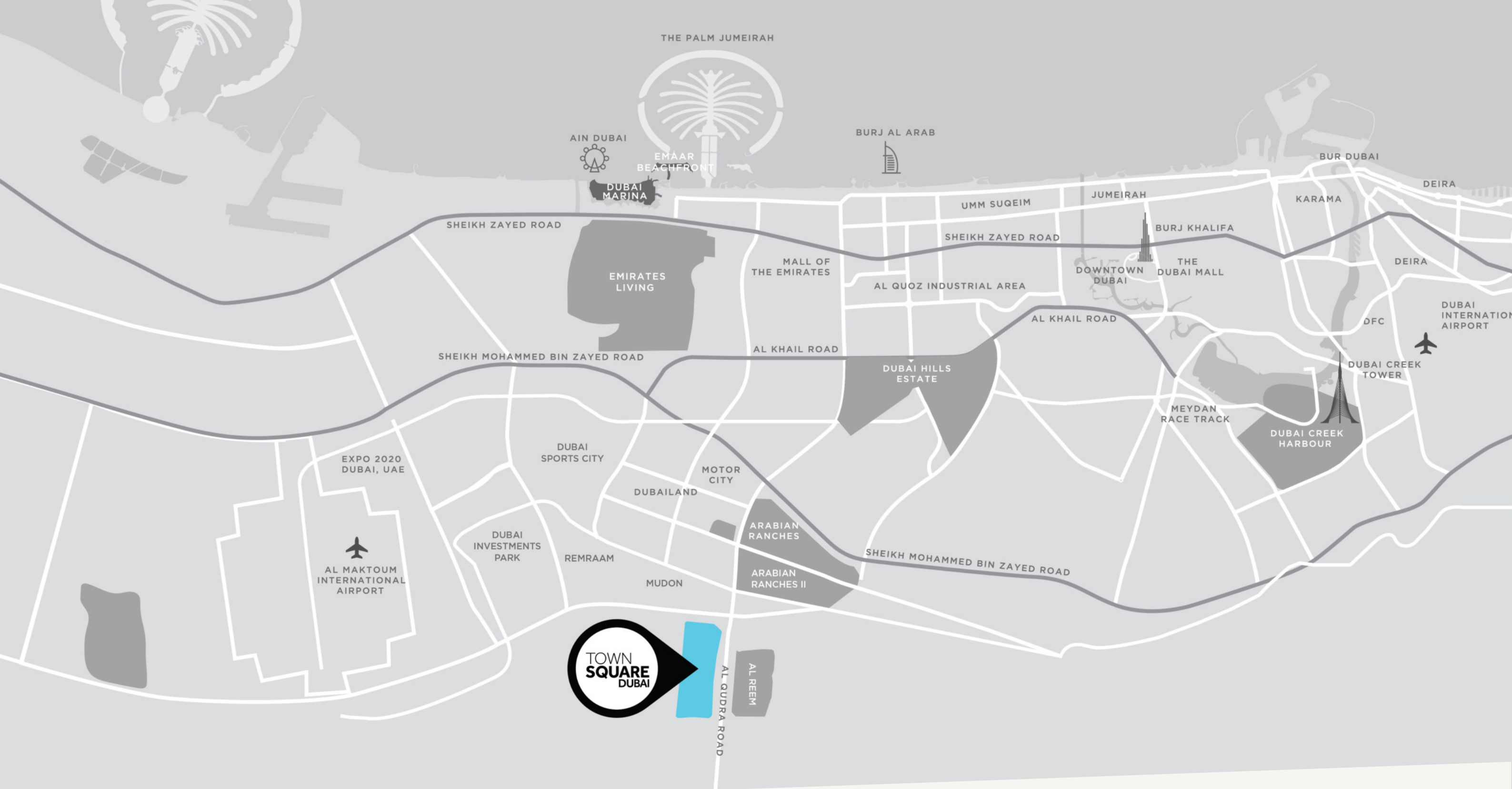


THE BEAUTIFULLY DESIGNED APARTMENTS & TOWNHOUSES

TOWN **SQUARE DUBAI**

With a central park and landscaped green spaces, the community offers a perfect setting for a healthy and peaceful lifestyle.

Surrounded by jogging trails, cycle lanes, cafes, restaurants and convenience retail - Town Square has everything you need as energy & warmth permeates every corner!



LOCATION PROXIMITIES



DUBAI INTL. AIRPORT
28 MIN

THE
DUBAI MALL

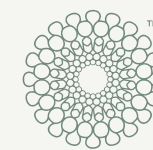
29 MIN



BURJ AL ARAB
24 MIN



DUBAI MARINA
27 MIN



DISTRICT 2020
20 MIN



DWC AIRPORT
25 MIN





Every detail has been meticulously curated to create an environment that is both aesthetically pleasing and functional, offering a truly exceptional living experience.



A FIRST CLASS RESIDENCE

HOLLAND GARDENS

With a mix of studios, 1, 2, 3 bedroom & duplex apartments - the intuitive layouts are contemporary, keeping in mind privacy and comfort.

Come home to an airy, welcoming lobby, and unwind at the landscaped courtyard which houses a swimming pool, spacious deck and kids play areas.





IMMERSE YOURSELF IN TIMELESS INTERIOR ELEGANCE

Living and dining areas offer abundant natural light. Bedrooms are furnished with glazed porcelain floors and in-built wardrobes whereas master bedrooms have an en-suite bathroom.

The kitchen is a chef's dream, with state-of-the-art appliances, ample storage, and sleek, modern finishing which includes stain proof prep counters, overhead cabinets & glazed porcelain tile flooring.

Aesthetic and functional - each space is carefully designed to offer you a home you can truly call your own!





The facade design has a contemporary approach to ensure warm interiors with natural lighting.



REVEL IN THE BREATHTAKING EXTERIOR

All apartments have great views to connect them with the surrounding landscape.

Exterior finishes are selected inline with the natural setting of Town Square, and yet have an individuality with warm cladding finishes along with textured stucco.



LIFESTYLE

Town Square Park is an urban green space with vast open lawns, interactive kids play areas that also hosts community engagement pop ups and events.

The 50,000 sqm park is bordered by open-air cafés, hundreds of retail outlets, invigorating jogging trails and a whole lot more amenities for its residents to enjoy.

FACILITIES

Live in a home where a variety of wellness, entertainment and leisure options are just a step away.

Holland Gardens at Town Square Dubai includes retail and F&B outlets on the ground floor, a gorgeous swimming pool, kids play areas in the courtyard, premium gym, and all amenities one would expect from a world-class residential address.





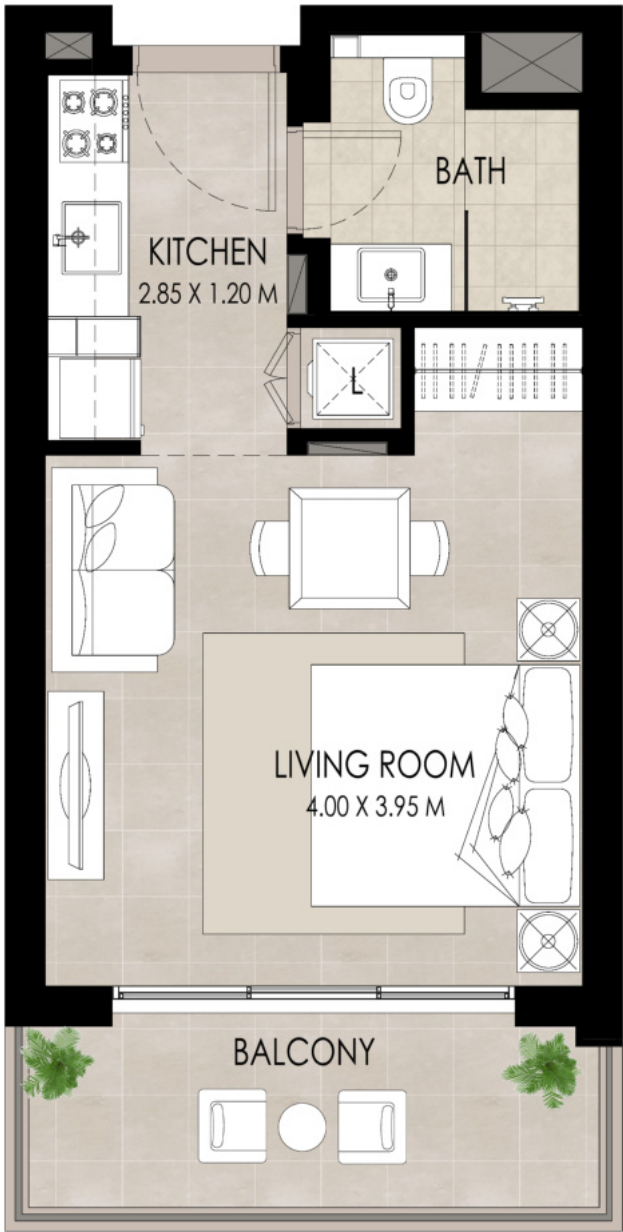




FLOOR PLANS

STUDIO | TYPE A

SUITE AREA	30.01 Sq.m / 323.02 Sq.ft
BALCONY AREA	7.36 Sq.m / 79.22 Sq.ft
TOTAL BUILT-UP AREA	37.37 Sq.m / 402.25 Sq.ft



*Balcony sizes vary

1 BEDROOM | TYPE A

SUITE AREA	51.96 Sq.m / 559.29 Sq.ft
BALCONY AREA	7.26 Sq.m / 78.15 Sq.ft
TOTAL BUILT-UP AREA	59.22 Sq.m / 637.44 Sq.ft



*Balcony sizes vary

2 BEDROOM | TYPE F

SUITE AREA	82.94 Sq.m / 892.76 Sq.ft
BALCONY AREA	10.53 Sq.m / 113.34 Sq.ft
TOTAL BUILT-UP AREA	93.47 Sq.m / 1006.10 Sq.ft



*Balcony sizes vary

3 BEDROOM | TYPE B

SUITE AREA	120.51 Sq.m / 1297.16 Sq.ft
BALCONY AREA	20.66 Sq.m / 222.38 Sq.ft
TOTAL BUILT-UP AREA	141.17 Sq.m / 1519.54 Sq.ft



*Balcony sizes vary

HG HOLLAND GARDENS

TOWN
SQUARE
DUBAI

by **NSHAMAA** 



Registered Channel Partners

Follow us:



#houseitdotcom

 www.houseit.com

Houseit Next Real Estate Broker (Office Registration No) ORN: 21647
Boulevard Plaza II, Level # 23, Opp Burj Khalifa, Downtown Dubai. UAE. P.O.Box 124342